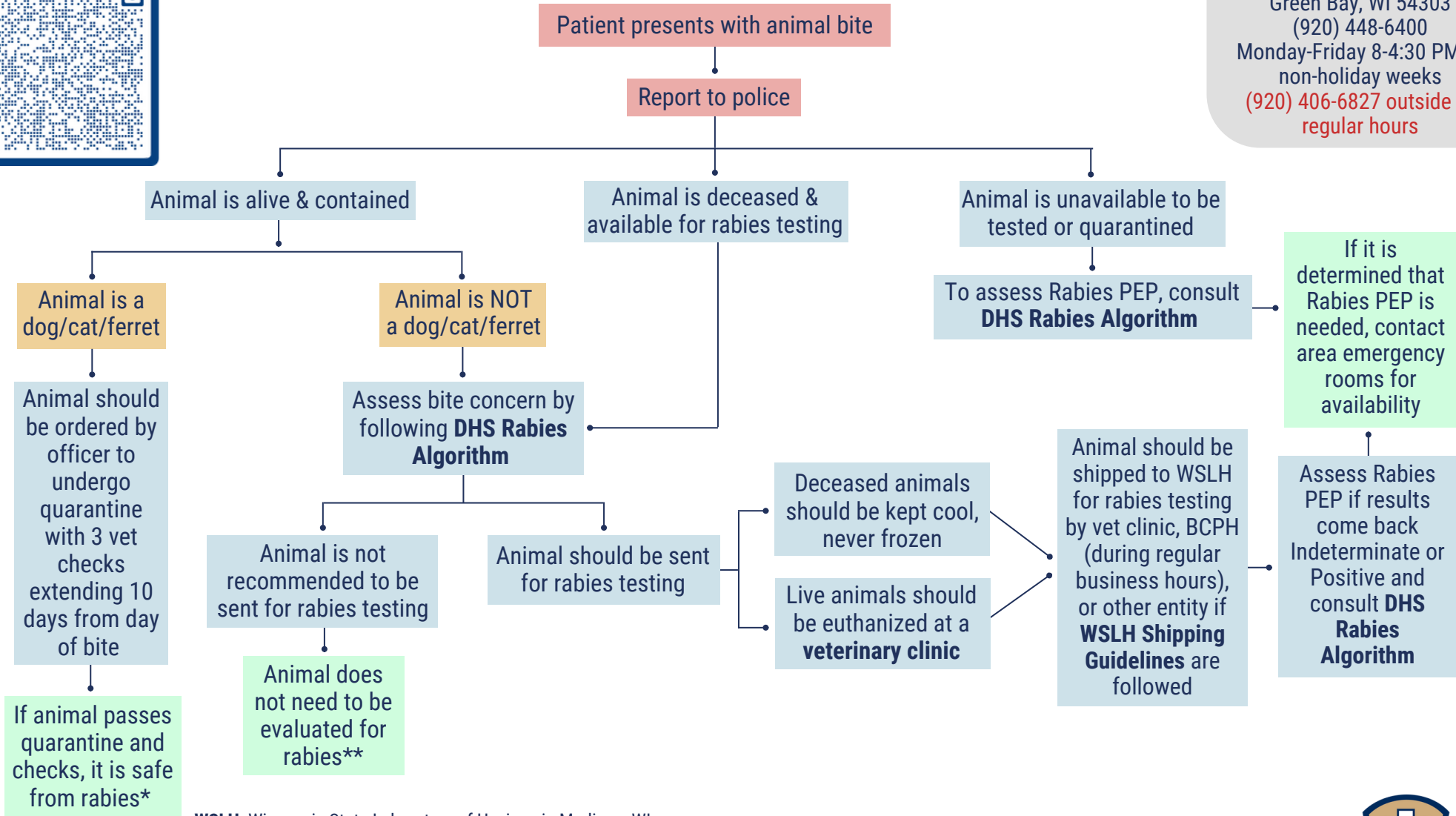


Brown County Public Health

Animal Bite Rabies Flowchart



Brown County Public Health
 2198 Glendale Avenue
 Green Bay, WI 54303
 (920) 448-6400
 Monday-Friday 8-4:30 PM of non-holiday weeks
 (920) 406-6827 outside of regular hours



WSLH: Wisconsin State Laboratory of Hygiene in Madison, WI

DHS: Wisconsin Department of Health Services

DHS Rabies Algorithm: www.dhs.wisconsin.gov/rabies/algorithm/index.htm

WSLH Shipping Guidelines: www.slh.wisc.edu/clinical/diseases/rabies/packaging-and-transport/

Brown County Veterinary Clinic List: <https://www.browncountywi.gov/departments/public-health/general-information/services/rabies-control/>

*If animal does not complete quarantine or veterinary checks, follow the DHS Rabies Algorithm for Rabies PEP Evaluation. If Rabies PEP is needed, contact area emergency rooms for availability.

**This evaluation is for rabies and not other infectious diseases. Consult BCPH or DHS if other concerns are present.



Public Health
 Prevent. Promote. Protect.

Brown County
 Health & Human Services