



Public Health
Prevent. Promote. Protect.

Brown County
Health & Human Services

Brown County Public Health

Tourist Rooming House Guide

Includes Information Regarding:

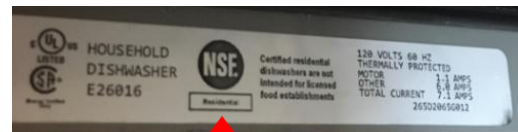
- **Dish Sanitization**
- **Bunk Bed Requirements**
- **Jetted Tub Maintenance**
- **Egress Windows and Fire Exits**
- **Building Evacuation Diagrams**
- **Handrail and Guardrail Requirements**
- **Smoke Alarm Operation and Location Requirements**
- **Carbon Monoxide Alarm Operation and Location Requirements**

Approved Dish Sanitization Methods

Two options are available for cleaning and sanitizing dishes:

1. Operator-provided dish sanitization:

- Operator must wash, rinse, and sanitize the entire supply of kitchenware for each guest stay.
 - Operators may use an NSF-certified residential dishwasher with a sanitize cycle for this process. Below are indicators that a residential dishwasher meets these requirements.



2. Guest-provided dish sanitization:

- Operator must at minimum wash the dishes between each guest stay.
- Operator must post utensil sanitization sign to notify guests that the utensils have been washed, but not sanitized. A copy of this sign is provided on the next page.
- Operator must provide an approved sanitizer (typically un-scented bleach) for guests to use to sanitize the available dishware should they choose to.

**Food & Beverage Utensils Have Been Provided in this Unit as
a Guest Convenience**

Utensils Have Been Cleaned but Not Sanitized

It is recommended that you wash with a detergent, rinse with clean water
and sanitize utensils before their use.

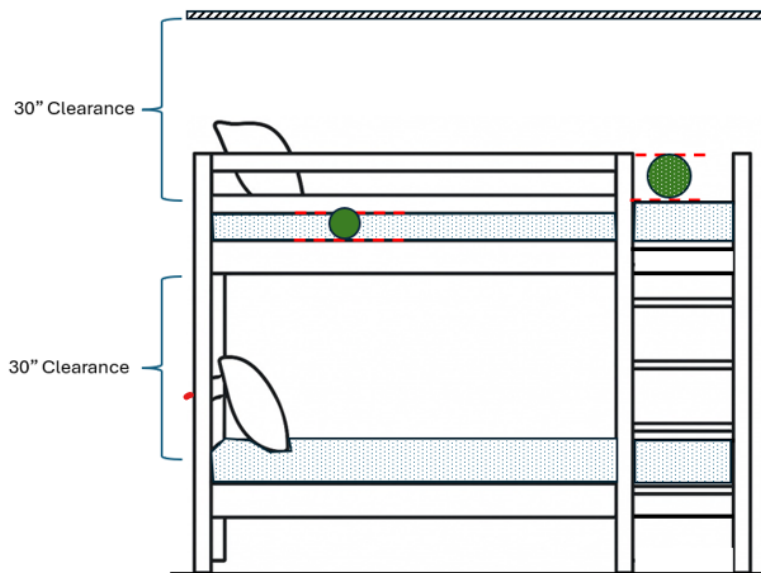
To Sanitize:

1. Add 1 teaspoon of unscented bleach per gallon of clean, cool water
2. Immerse utensils in solution for a minimum of 30 seconds
3. Air dry utensils

BLEACH FOR SANITIZATION IS LOCATED:

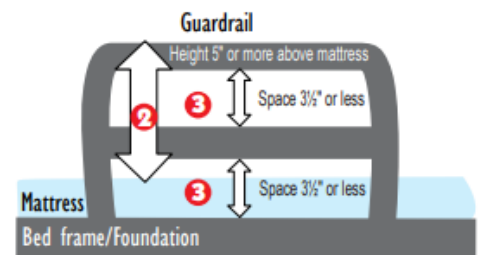
Bunk Bed Requirements

- No more than 2 beds are stacked vertically.
- A space of at least 2.5 feet is provided between the top of the lower mattress to the bottom of the frame of the upper bunk bed.
- A space of at least 2.5 feet is provided above the mattress of the upper bunk and the ceiling
- The upper bunk is provided with a guard at least 5 inches above the top of the mattress. The bottom of the guard is no more than 3.5 inches above the top of the upper bunk bed frame.



● $\leq 3.5"$ Spacing ● $\geq 5"$ Spacing

- 2 Guardrail height must be 5 inches or more above the mattress
- 3 Vertical spacing between rails and between the lowest rail and the mattress foundation or bed frame may not exceed $3\frac{1}{2}$ inches



Jetted Tub Maintenance

Between different patrons and at least once per week, the following cleaning procedure should occur:

Clean

1. If easily removable: remove the drain cover, all jet covers, and any other recirculation covers. Wash and scrub these parts separately using a grease dissolving agent.
2. Re-install the drain cover and fill the tub with water to a level 2 inches above the jets. The water should be heated to the temperature recommended by the manufacturer's instructions.
3. Add the recommended amount of detergent to the water and let the detergent dissolve.
4. Turn on the jets at a low setting for at least 10 minutes to recirculate the solution through the hose lines.
5. Turn off the jets and scrub the surfaces of the tub. Then drain the tub completely.

Rinse

1. Refill the tub with warm water to a level 2 inches above the jets and recirculate for 5-10 minutes.
2. Turn off the jets and drain the tub basin.

Sanitize

1. Reinstall all jet covers and any other recirculation covers that were removed.
2. Fill the tub with warm water to a level 2 inches above the jets, and add sanitizer to the tub at the concentration recommended by the manufacturer.
3. Run the jets for 5-10 minutes to recirculate the sanitizer through the hose lines.
4. Drain the tub and let the sanitized surfaces air dry. No need to rinse off the sanitizer.

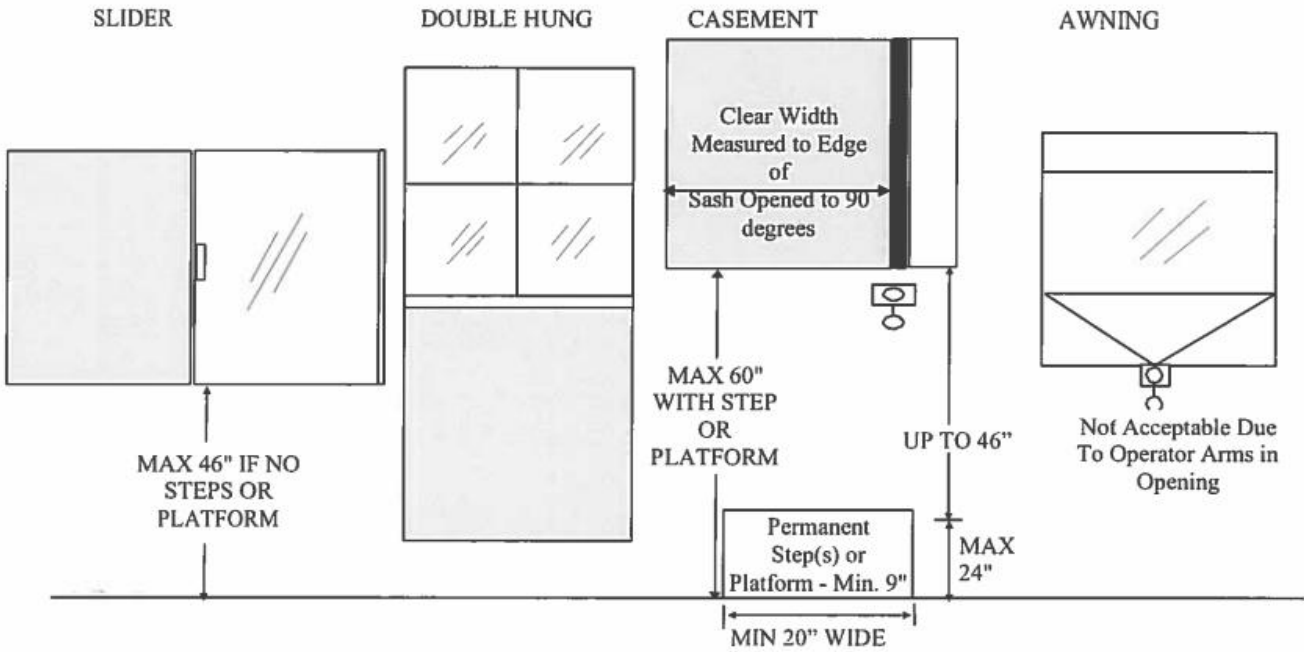
Common detergents: Powder or liquids designed to safely clean grease residues from fiberglass, acrylic, porcelain, ceramic tile, and grout; and formulated not to damage chrome, stainless steel or copper.

Common sanitizers: Chlorine bleach, quaternary ammonium, iodine, acid, or hydrogen peroxides designed specifically for jetted tub sanitizing.

Egress Window and Exit Requirements

SPS 321.03 (6) Egress Window Dimensions

Minimum
20" wide x 24" high
or
24" wide x 20" high



Egress Window and Exit Requirements (cont.)

(4) Exits from sleeping rooms.

(ag) *Applicability.* This section only applies to a tourist rooming house.

(ar) *A basement or ground floor used for sleeping.* A basement or ground floor used for sleeping shall be provided with at least 2 separate exits in accordance with the following requirements: P

1. At least one of the exits shall be a door to the exterior of the dwelling or a stairway or ramp that leads to the floor above. Pf
2. The second exit shall be a door to the exterior of the dwelling, a stairway or ramp that leads to the floor above, a stairway that leads to a garage provided the garage has an exit door other than the overhead door, or an egress window located in each sleeping room that complies with par. (g). Pf

(b) *Exits from the first floor.* First floors shall be provided with at least 2 exit doors in accordance with the following requirements: P

1. At least one of the exits shall discharge to grade and may not go through a garage. This exit may include interior or exterior stairs. Pf
2. The second exit may discharge into an attached garage provided the garage has an exit door other than the overhead door that discharges to grade. Pf
3. Any exit that does not comply with subd. 1. may discharge to an outside balcony that complies with par. (f). Pf
4. One of the exit doors required in this paragraph may be omitted for a tourist rooming house that has one or more egress windows on the first floor. If there are first floor sleeping rooms, each must have a window that complies with par. (g). Pf

(c) *Exits from the second floor.*

1. At least 2 exits shall be provided from the second floor. P
 - a. At least one of the exits shall be a stairway or ramp and lead to the first floor or discharge to grade. Pf
 - b. The second exit may be via a stairway or ramp that discharges to grade, or to a balcony which complies with par. (f), or to a deck that complies with sub. (2) (a) and (b) and that is no more than 15 feet above the grade below. Pf
2. Windows that comply with par. (g) may be provided in each second floor sleeping room or in another location on the second floor if there are no sleeping rooms on that floor in lieu of the second exit. Pf

(d) *Exits above the second floor.* At least 2 exits shall be provided for sleeping rooms above the second floor in accordance with all of the following: P

1. The exits shall be stairways or ramps that lead to the second floor or discharge to grade. Pf

Egress Window and Exit Requirements (cont.)

2. The exits shall be located such that an exit is accessible to the second floor if another exit is blocked. Pf

(e) *Exits from lofts.*

1. At least one stairway exit shall be provided, to the floor below, for a loft exceeding 400 square feet in area. P

2. At least one stairway or ladder exit shall be provided to the floor below for a loft, 400 square feet or less, in area. P

(f) *Balconies.* A balcony shall meet all of the following:

1. Provided with guards in accordance with sub. (2) (b). Pf

2. Located no more than 15 feet above grade. Pf

(g) *Windows used for exiting.* A window used for exiting shall meet all of the following:

1. The window shall be openable from the inside without the use of tools or the removal of a sash. If equipped with a storm window or screen, it shall be openable from the inside. Pf

2. The size of the window opening shall be at least 20 inches by 24 inches irrespective of the height or width of the window itself. P

3. No portion of the window, including stops, stools, meeting rails and operator arms, shall infringe on the required opening. Pf

4. For any window used for exiting, the lowest point of opening shall be no more than 60 inches above the floor. Pf

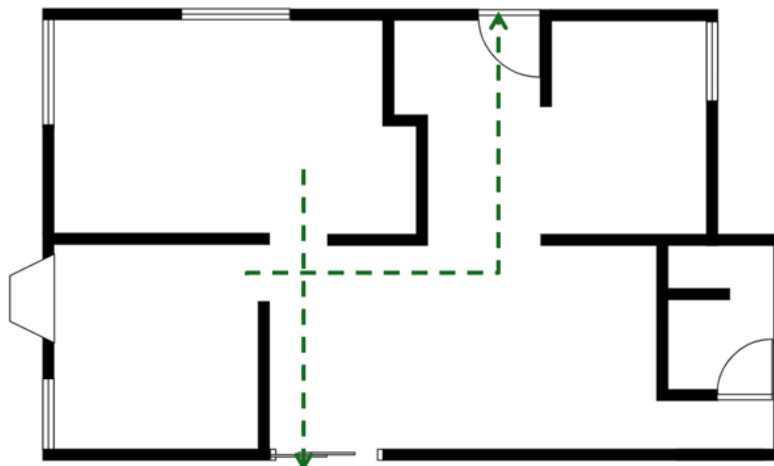
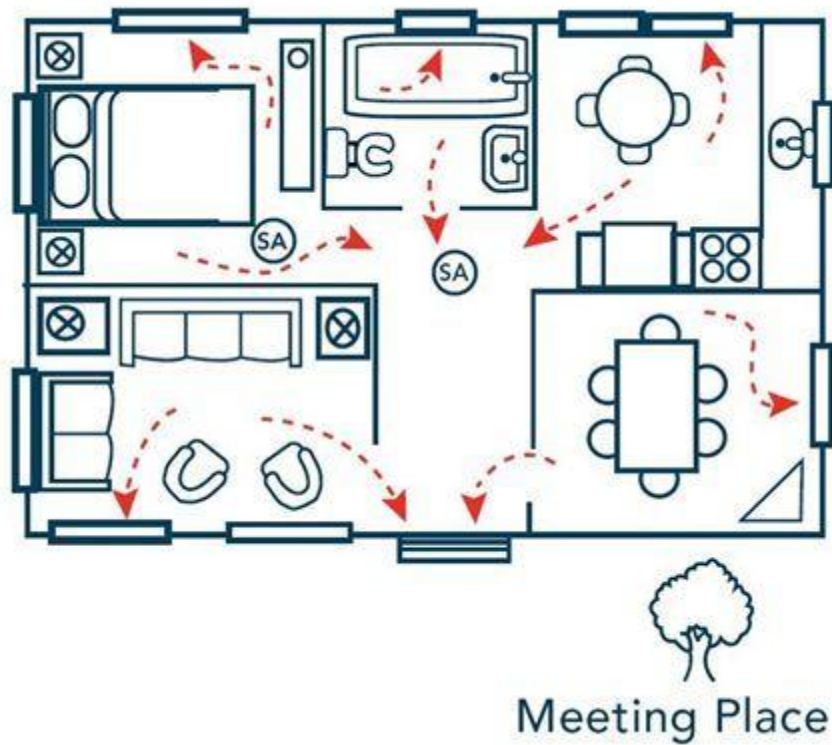
5. If the lowest point of opening is more than 46 inches above the floor, a permanent platform or fixture shall be installed such that a flat surface at least 20 inches wide and 9 inches deep is located no more than 46 inches directly below the clear opening. Pf

6. An egress window under a deck or porch shall discharge through a clear path of at least 36 inches in height and 36 inches in width, and no more than 15 feet in length, to a yard or open space. Pf

Building Evacuation Diagram

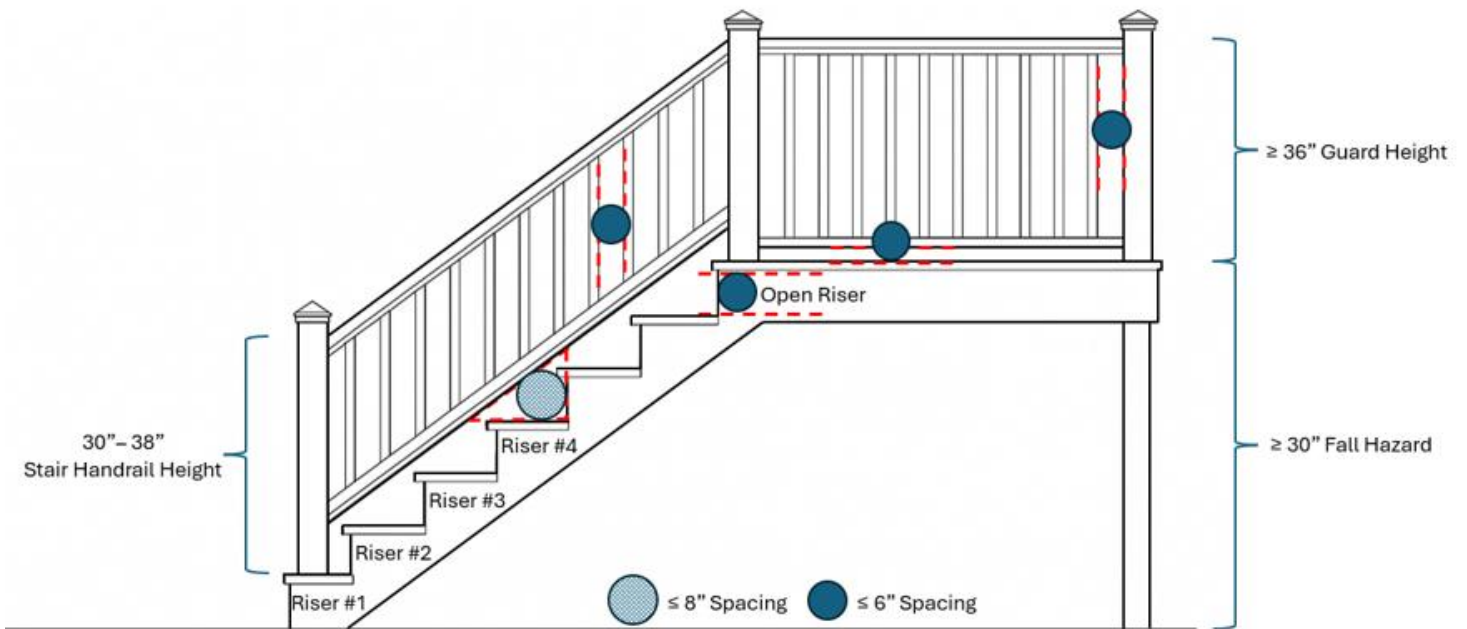
- A tourist rooming house shall be provided with a building evacuation diagram and meet all of the following:
 - Be conspicuously posted in each sleeping room or provided in the check-in materials given to the guest.
 - Indicate a minimum of 2 evacuation routes that lead to the exterior from each accessible floor.

Example:



Handrails on Stairs & Guards on Elevated Surfaces

- A handrail must be provided for a flight of stairs with more than 3 risers.
- A handrail must be at a height of 30 to 38 inches above the stair tread.
- Guards must be provided on open sides of stairs consisting of more than 3 risers.
- Guards must be provided on all surfaces elevated more than 30 inches above the floor or grade.
- The space between guards and the space formed between the bottom of the guard and an elevated walk surface must be equal to or less than 6 inches.
- The triangular area formed between the tread, riser, and bottom guard of a stairway must be equal to or less than 8 inches in width.
- Guard height must be equal to or greater than 36 inches on elevated walking surfaces.



Smoke Alarms

- Smoke alarms must conform to UL 217 as indicated on the device.
- Smoke alarms must be installed according to the manufacturer's directions.
- Smoke alarms must be maintained in working order (batteries replaced as directed by manufacturer).
- Smoke alarms must be non-expired.
- Smoke alarms must be provided in the following locations:
 - On each floor level to include the basement or ground floor
 - At the top of each stairway excluding crawlspaces and unfinished attics
 - Outside each separate sleeping area, within 21 feet
 - Within each sleeping room



The date posted on the smoke alarm to the left is the device's manufacture date. UL listed devices expire 10 years beyond the date of manufacture.

The device to the left is expired and no longer approved for use. The device expired on September 3, 2011.

Carbon Monoxide Alarm

- Carbon monoxide alarms must conform to UL 2034 as indicated on the device.
- Carbon monoxide alarms must be installed according to the manufacturer's directions.
- Carbon monoxide alarms must be maintained in working order (batteries replaces as directed by manufacturers).
- Carbon monoxide alarms must be non-expired.
- Carbon monoxide alarms must be provided in the following locations:
 - Outside of each separate sleeping area within 21 feet.
 - In the sleeping room if a fuel-burning appliance (fireplace, gas washer/dryer, etc.) is located in the sleeping room or its attached bathroom.



CERTIFIED



The date posted on the carbon monoxide alarm to the left is the device's manufacture date. UL listed devices expire 10 years beyond the date of manufacture.

The device to the left will expire on July 7, 2027.